

S-Charge System

The S-Charge System is a user friendly, flexible, internal battery system with an OLED display and a magnetic charger, that is fitted into a prosthetic forearm. This allows the user to easily activate, deactivate and charge their prosthesis whilst confidently monitoring the power status during use through the display of real-time battery life icons.

Flexible S-Cell batteries provide up to 1100, 1650 or 2200mAh to the terminal device, as 2, 3 or 4 batteries can be accommodate in one system.

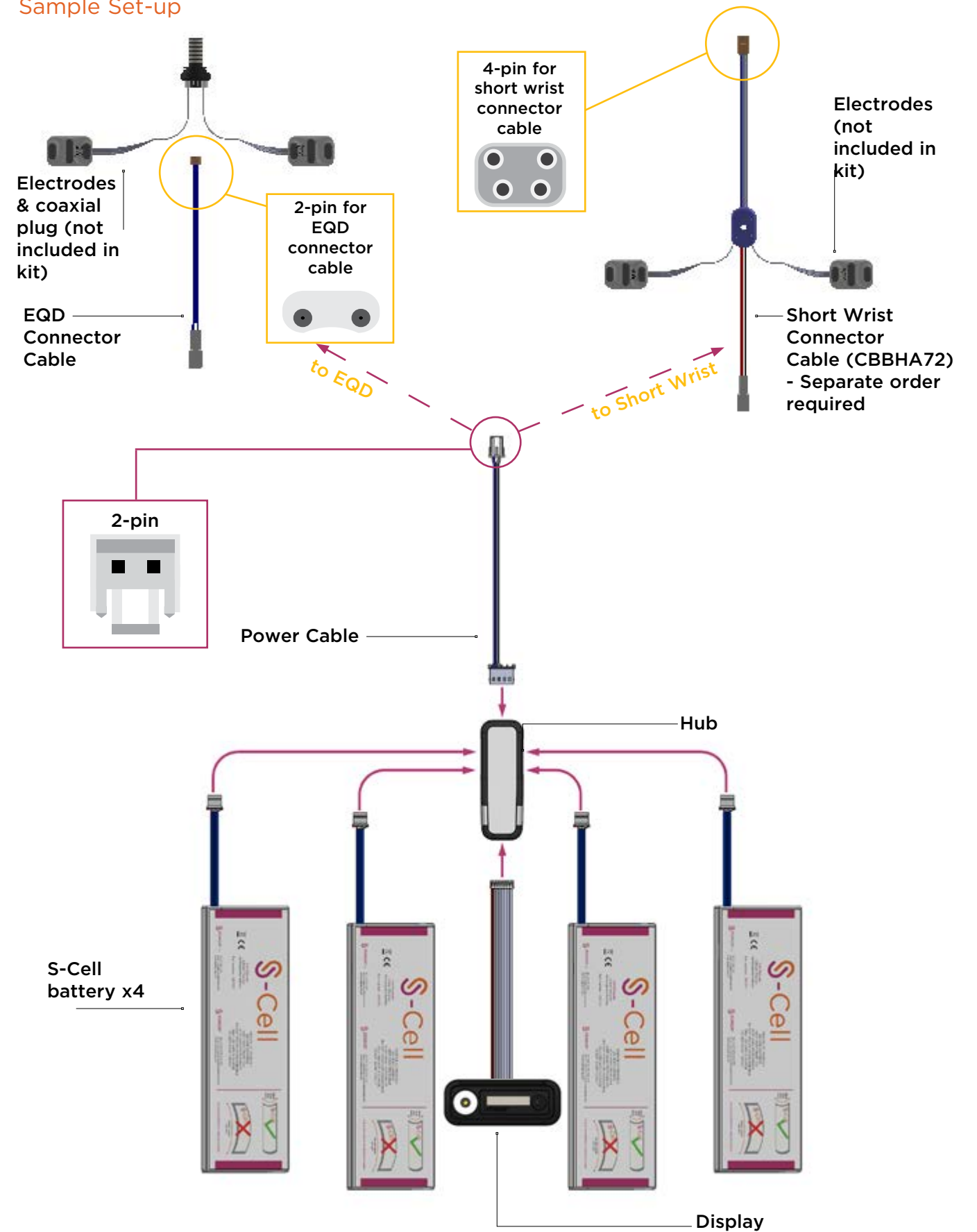
Features and Benefits

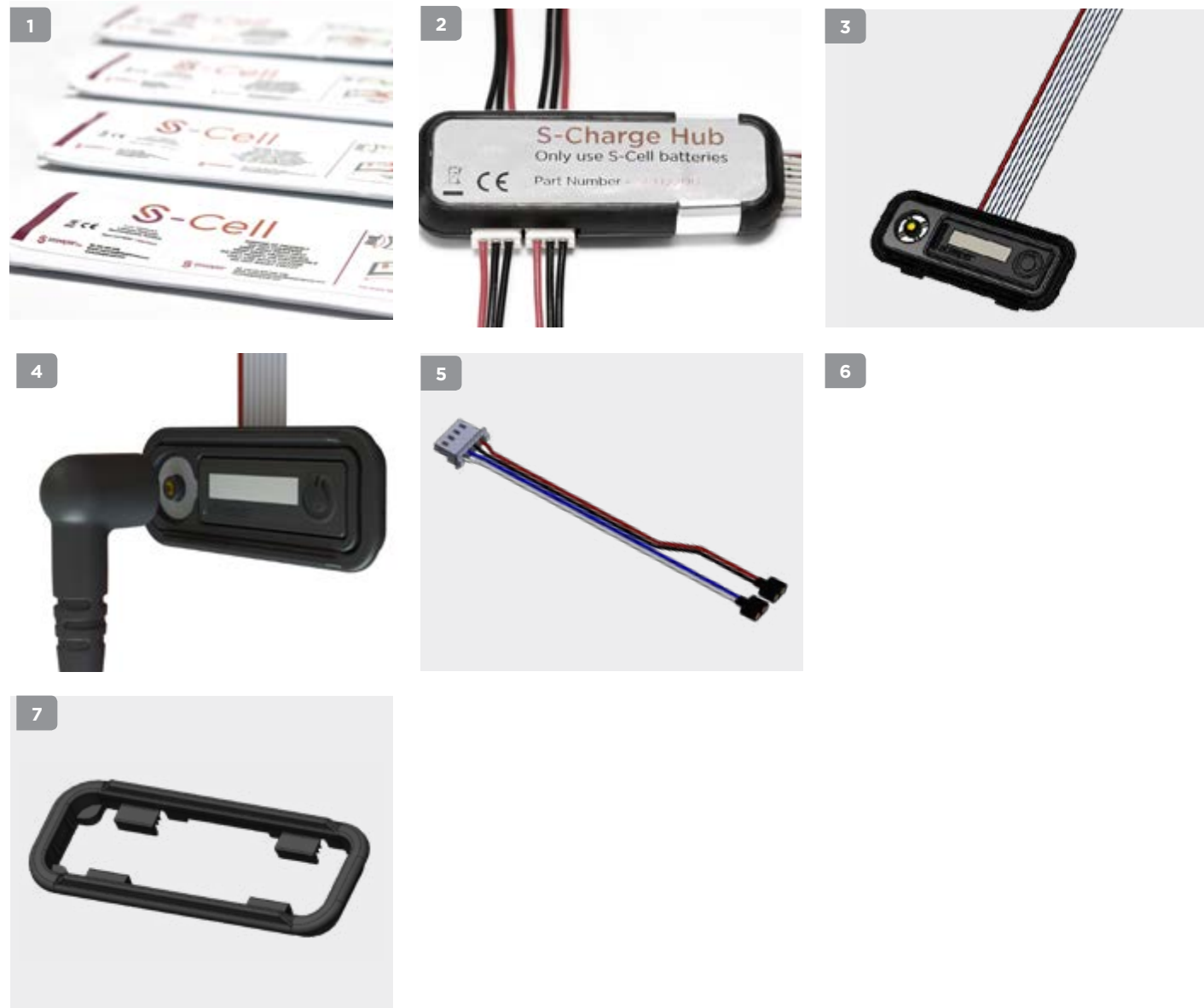
- 3.2mm low profile batteries require minimal space in the forearm
- Fully charged within 4 hours
- Easy-release magnetic charger
- 10 language options
- Flexible configuration as the hub can be placed anywhere in the forearm
- Simple two-button operation to activate and select models
- Compatible with all powered upper limb systems with equivalent power rating (8.4V at full battery charge, 7.0V at low battery cut off, 5.0A peak current). Please contact your local service centre to confirm compatible prosthetic hand systems.



Myoelectric Hands and Components - S-Charge System

Sample Set-up





S-Charge System Full Kit Part Number: SC2200
Full system kit contains the following items and quantities.

	Description	Quantity	Dimensions (each)	Current (each)	Capacity	Voltage
1	S-Cell Battery	4	128mm x 42mm x 3.5mm	Max 2.75A	550mAh	Nominal 7.4V Min 7.0V, Max 8.4v
2	Hub	1	58mm x 20mm x 10mm	NA	NA	NA
3	Display	1	50mm x 20mm x 7mm			
4	Magnetic wall charger	1				
5	Power connector cable	1				
6	EQD connector cable	1				
	Lamination dummies	4				
7	Mounting frames	3	50mm x 20mm x 7mm			
	Foam gaskets	3				
	Alignment stickers	2				

Part Number	Spare Parts
SCBP2200	S-Cell Batteries Batteries (4)
SCHUB	S-Charge Hub Kit Hub (1), power connector cable (1), EQD connector cable (1)
SCDIS	S-Charge Display Kit Display (1), mounting frames (3), mounting frame gaskets (3) and alignment stickers (2)
SWC2200	S-Charge Wall Charger Wall charger including mains adapters (UK, US, EU, AUS) (1)
SCDKIT	S-Charge Dummy Kit S-Cell lamination dummies (4), Hub dummy (1), Display dummy (1), alignment stickers (2)
SCMFKIT	S-Charge Mounting Frame Kit Mounting frames (3), mounting frame gaskets (3), alignment stickers (2)