

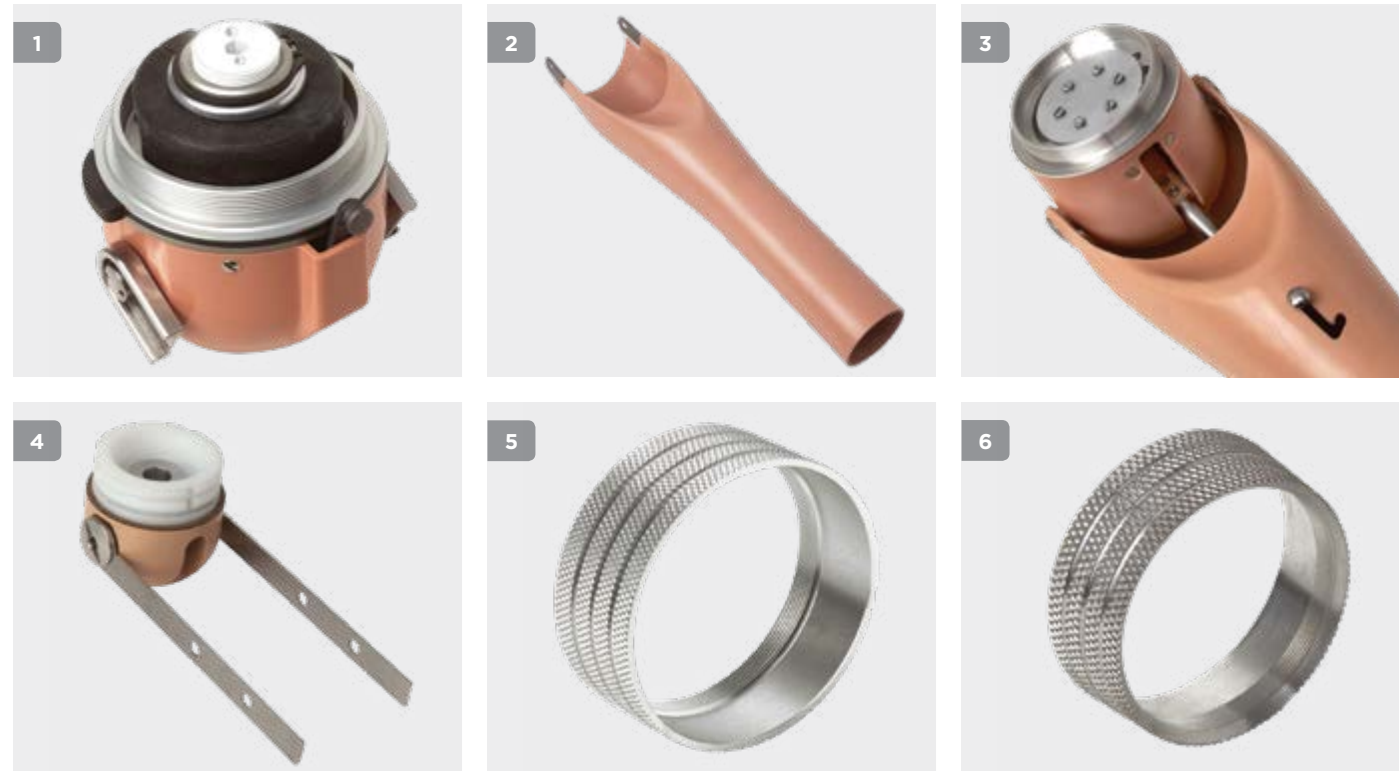


Elbow units and external elbow joints are available to suit all ages and allow easy installation, rugged durability and simplicity of operation. Numerous choices available in size, colours and operation to match the user's needs. Simpler systems allow friction control over elbow flexion and humeral rotation, while manual elbow lock control is also available for sound side activation.

The automatic elbow range allows linkage to a harness system for body control over elbow position. Proven to be one of the most reliable locking elbow units in the world, complete with a manual humeral rotation lock.

A wide selection of adapters and forearms complement the range.

## Elbow Units and External Joints - Elbow Units



Colours for Elbow Unit and Prefabricated Forearm (for indication only).



### Automatic Elbow

Eight lock positions may be engaged / disengaged alternately through the actuator. This can be done with the sound hand or by another body movement captured through a harness. Locked / unlocked control of humeral rotation also allows for friction adjustment of this movement. Detachable forearms with parallel distal sections are available in various wrist sizes. Links proximally to parallel or tapered lateral rings. Four colours available.

Part Number	Elbow Size (Dia.)	Description	Wrist Options	Weight
1 B11185#	58mm (2 ¼")	Automatic Elbow, Child	38mm, 45mm (1 ½", 1 ¾")	242g (8 ½ oz)
C07375#	64mm (2 ½")	Automatic Elbow, Adolescent	50mm, 54mm (2", 2 ⅛")	316g (11 oz)
C07286#	70mm (2 ¾")	Automatic Elbow, Adult	50mm, 54mm (2", 2 ⅛")	334g (11 ¾ oz)

### Prefabricated Forearm for Automatic Elbow

Laminated in polyester with toughened integrated side steels to fit Automatic Elbow. Side steels have prepositioned holes for placement of forearm pulley. The parallel distal section allows finished lengths to be determined accurately. Supplied in four colours. Please contact customer services for alternative colour requirements.

Part Number	Elbow Size (Dia.)	Description	External Wrist (Dia.)	Overall Length	Parallel Length	Weight
2 C10564#	58mm (2 ¼")	Child Forearm	38mm (1 ½")	240mm (9 ½")	120mm (4 ¾")	96g (3 ½ oz)
C10560#	58mm (2 ¼")	Child Forearm	45mm (1 ¾")	240mm (9 ½")	120mm (4 ¾")	114g (4 oz)
C10552#	64mm (2 ½")	Adolescent Forearm	50mm (2")	260mm (10 ¼")	120mm (4 ¾")	114g (4 oz)
C10556#	64mm (2 ½")	Adolescent Forearm	54mm (2 ⅛")	260mm (10 ¼")	120mm (4 ¾")	151g (5 ½ oz)
C11381#	70mm (2 ¾")	Adult Forearm	50mm (2")	300mm (11 ¾")	120mm (4 ¾")	181g (6 ½ oz)
C07646#	70mm (2 ¾")	Adult Forearm	54mm (2 ⅛")	300mm (11 ¾")	120mm (4 ¾")	184g (6 ½ oz)

### Adult Manual Elbow

Manual control of five locking positions or free swing mode. Friction control over "ball into detent" humeral rotation. Integral forearm with parallel distal section of 54mm (2 1/8") for wrist placement. Four colour choices. Links proximally to B00230 or B06563 Lateral Rings.

Part Number	Elbow Size (Dia.)	Description	Wrist Diameter	Weight
3 B10612#	70mm (2 ¾")	Adult Manual Elbow	54mm (2 ⅛")	474g (16 ¾ oz)

**Note:** #Denotes finish colour. Add PK for Flesh Pink, ST for Suntan, MB for Mid Brown or DB for Dark Brown.

### Child Friction Elbow

Adjustable friction control of flexion, extension and humeral rotation. Side bars allow attachment of a locally made forearm. Integral proximal attachment plate for socket attachment. May also be used as a lightweight friction shoulder joint. Flesh Pink supplied as standard.

Part Number	Elbow Size (Dia.)	Description	Weight
4 C10828	38mm (1 ½")	Child Friction Elbow	81g (3 oz)
C10826	45mm (1 ¾")	Child Friction Elbow	81g (3 oz)

### Lateral Rings

For Manual and Automatic Elbows. External knurl for secure adhesion of laminate and internal thread allowing elbow to be fitted, secured or removed as necessary.

Part Number	Elbow Size (Dia.)	Description	Elbow	Weight
5 B12433	58mm (2 ¼")	Parallel	Automatic	24g (1 oz)
B07384	64mm (2 ½")	Parallel	Automatic	24g (1 oz)
B00230	70mm (2 ¾")	Parallel	Automatic or Manual	22g (1 oz)
6 B06563	70mm (2 ¾")	5° Taper	Automatic or Manual	26g (1 oz)

For USA orders contact - [sales@steeperusa.com](mailto:sales@steeperusa.com)

For UK/Rest of the world orders contact - [customerservices@steepergroup.com](mailto:customerservices@steepergroup.com)

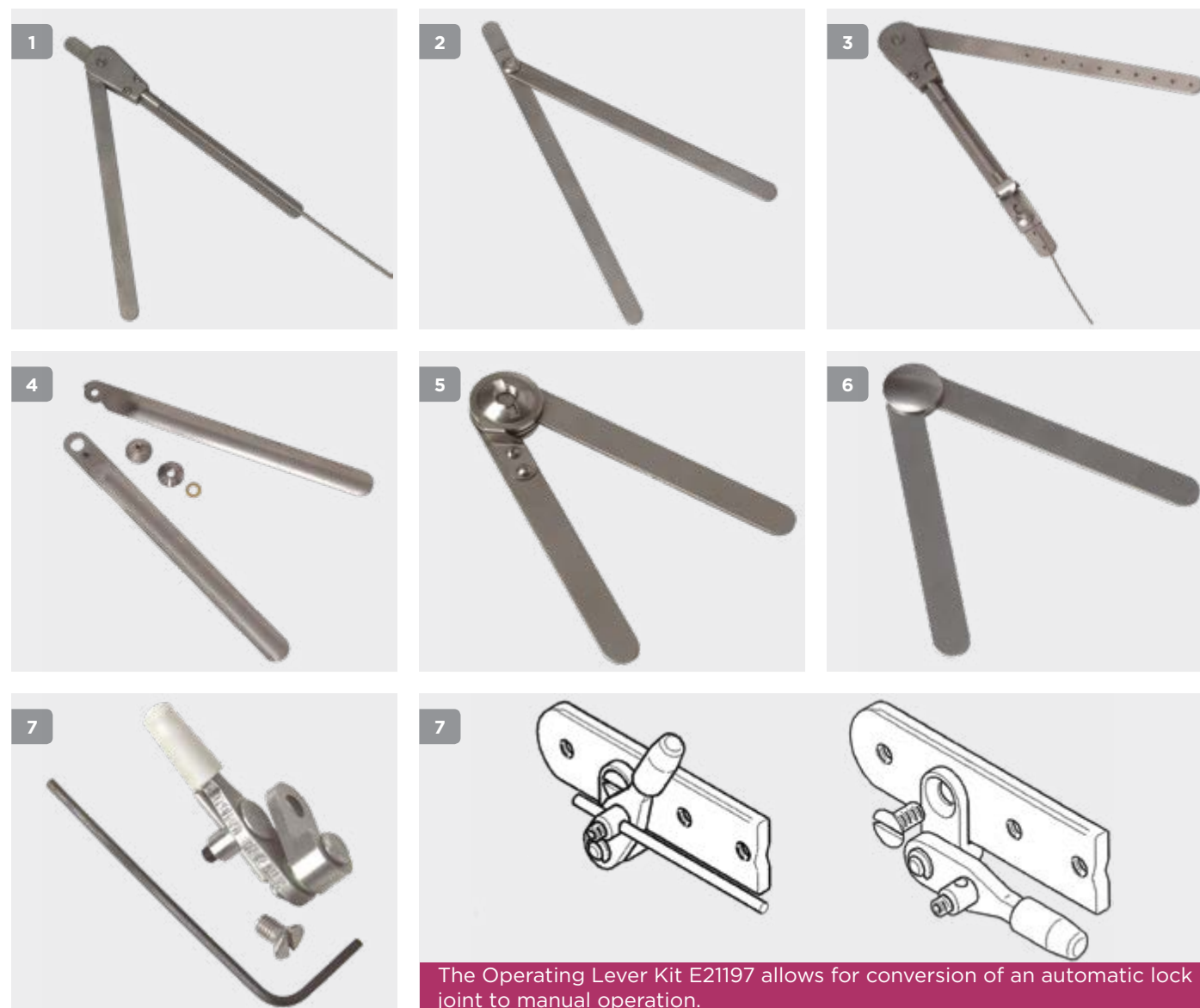


Elbow Dome				
Part Number	Size (Dia.)	Description	Elbow	
1 E20544#	58mm (2 ¼")	Elbow Dome, Slides and 4 Screws	Automatic Elbow	
E20517#	64mm (2 ½")	Elbow Dome, Slides and 4 Screws	Automatic Elbow	
E20518#	70mm (2 ¾")	Elbow Dome, Slides and 4 Screws	Automatic Elbow	
B05885#	70mm (2 ¾")	Elbow Dome	Manual Elbow	

**Note:** #Denotes finish colour. Add PK for Flesh Pink, ST for Suntan, MB for Mid Brown or DB for Dark Brown.

Button Screws				
Part Number	Description	Elbow		
2 A00564	Button Screw	All sizes Automatic Elbow		
2a B05116	Slotted Screw	Manual Elbow		
B10841	Slotted Screw for Child Elbow	Child Friction Elbow		
3 A00891	Torsion Socket Spanner for A00564 (¼" Drive Head)	n/a		

Automatic Elbow Spare Parts				
Part Number	Description	Elbow	Supplied	
4 E18026	Plunger Assembly	2 ¼" Automatic Elbow	Each	
E14066	Plunger Assembly	2 ½" and 2 ¾" Automatic Elbow	Each	
5 NCR0012	Circlip	2 ¼" Automatic Elbow	Each	
NCR0003	Circlip	2 ½" and 2 ¾" Automatic Elbow	Each	
6 SP800	Cam Return Spring	All sizes Automatic Elbow	Pack of 10	
7 B07832	Lateral Operating Ring	2 ¼" Automatic Elbow	Each	
B07400	Lateral Operating Ring	2 ½" Automatic Elbow	Each	
B08642	Lateral Operating Ring	2 ¾" Automatic Elbow	Each	
8 A00711	Spacer Shim 0.10mm	All sizes Automatic Elbow	Each	
A00710	Spacer Shim 0.20mm	All sizes Automatic Elbow	Each	
A00709	Spacer Shim 0.30mm	All sizes Automatic Elbow	Each	



The Operating Lever Kit E21197 allows for conversion of an automatic lock joint to manual operation.

## Automatic Lock Joints

Stainless steel joints suitable for prosthetic / orthotic application. May be inverted for manual operation on forearm. Supplied in matt finish. The system incorporates a shoulder shrug operated lock. A short extension piece below the joint may be used to stabilise the socket.

Part Number	Description	Length	Joint Head Width	Steel Thickness
1 C12693	Left Medial - Auto Lock	400mm (15 3/4")	14.4mm (5/8")	2.6mm (1/8") Lower, 3.2mm (1/8") Upper
C12623	Right Medial - Auto Lock	400mm (15 3/4")	14.4mm (5/8")	2.6mm (1/8") Lower, 3.2mm (1/8") Upper
2 B01197	Left / Right Lateral - Free Swing	400mm (15 3/4")	8.2mm (3/8")	2.6mm (1/8")

## Manual Lock Joints

Supplied with a series of predrilled and M3 tapped holes along the length and with a manually operated release mechanism on the forearm.

Part Number	Description	Length	Joint Head Width	Steel Thickness
3 C12701	Left Medial - Manual lock Flail Arm Application	400mm (15 3/4")	14.4mm (5/8")	2.6mm (1/8") Lower, 3.2mm (1/8") Upper
C12696	Right Medial - Manual lock Flail Arm Application	400mm (15 3/4")	14.4mm (5/8")	2.6mm (1/8") Lower, 3.2mm (1/8") Upper

## Free Swing Joints

Suitable for long transhumeral prostheses or as guide joints for very short transradial prostheses or for elbow orthoses. These joints are manufactured from stainless steel. Fitted with an extension stop at 8°. Supplied unassembled the joints are riveted at set up.

Part Number	Description	Length	Width	Thickness	Boss Diameter
4 B10168	Plain Joint Left Medial / Right Lateral - Free Swing	343mm (13 1/2")	9.5mm (3/8")	1.6mm (1/16")	16mm (5/8")
B07990	Plain Joint Right Medial / Left Lateral - Free Swing	343mm (13 1/2")	9.5mm (3/8")	1.6mm (1/16")	16mm (5/8")

## Friction Control Joints

Friction adjustment to allow passive positioning of prosthetic forearm or orthosis. Non locking. Child application.

Part Number	Description	Length	Width	Thickness	Boss Diameter
5 B05774	Left Medial - Friction Steel	65mm (6 1/2")	9.5mm (3/8")	1.6mm (1/16")	16mm (5/8")
B05775	Right Medial - Friction Steel	65mm (6 1/2")	9.5mm (3/8")	1.6mm (1/16")	16mm (5/8")
6 B11263	Left Lateral - Free Swing	65mm (6 1/2")	9.5mm (3/8")	1.6mm (1/16")	16mm (5/8")
B11264	Right Lateral - Free Swing	65mm (6 1/2")	9.5mm (3/8")	1.6mm (1/16")	16mm (5/8")

## Operating Lever Kit

The Operating Lever Kit is designed to be used with the following joints (C12693, C12623 and C12696) and provides an alternative manual lever release mechanism. The lever release should be situated on the forearm which requires the auto lock steels to be inverted.

Part Number	Description
7 E21197	Operating Lever Kit

**Note:** All steels supplied individually - not in pairs.