

Cable Operated and Spring Hands



Our range of cable operated and spring hands provide functional benefits with improved cosmetic appearance. The adult and teenage range is manufactured from high strength aerospace alloy, housed inside a flexible PVC shell and operated by body-powered cable control or manual operation.

Provisions are made for multiple wrist and cable connection options. These hands are compatible with the popular Elegance range of full length silicone and PVC cosmetic gloves. In addition, we offer two children's sizes which are constructed from rugged plastic mouldings to withstand the demands of a growing child.



Plain Base



Threaded Stud

Cable Operated Hand - Front Pull Voluntary Opening

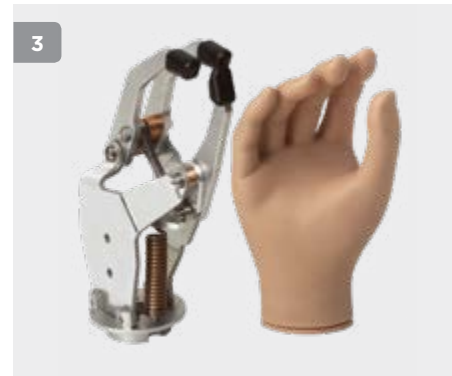
Part Number Plain Base	Part Number M12 x 1.5 stud	Part Number ½ x 20 TPI stud	Size	Left / Right	Application	Wrist Unit Option	Male Glove Number	Female Glove Number
1 MHA675LF	MHA675LFEU	MHA675LFNA	6 ¾	Left	Child (8 -12 yrs)	45mm (1 ¾")	310	310
MHA675RF	MHA675RFEU	MHA675RFNA	6 ¾	Right	Child (8 -12 yrs)	45mm (1 ¾")	311	311
MHA725LF	MHA725LFEU	MHA725LFNA	7 ¼	Left	Adolescent / Adult	50mm (2")	306	304
MHA725RF	MHA725RFEU	MHA725RFNA	7 ¼	Right	Adolescent / Adult	50mm (2")	307	305
MHA775LF	MHA775LFEU	MHA775LFNA	7 ¾	Left	Adult	54mm (2 ½")	302	312
MHA775RF	MHA775RFEU	MHA775RFNA	7 ¾	Right	Adult	54mm (2 ½")	303	313
MHA825LF	MHA825LFEU	MHA825LFNA	8 ¼	Left	Adult	54mm (2 ½")	300	N/A
MHA825RF	MHA825RFEU	MHA825RFNA	8 ¼	Right	Adult	54mm (2 ½")	301	N/A

Cable Operated Hand - Back Pull Voluntary Opening

Part Number Plain Base	Part Number M12 x 1.5 stud	Part Number ½ x 20 TPI stud	Size	Left / Right	Application	Wrist Unit Option	Male Glove Number	Female Glove Number
2 MHA675LB	MHA675LBEU	MHA675LBNA	6 ¾	Left	Child (8 -12 yrs)	45mm (1 ¾")	310	310
MHA675RB	MHA675RBEU	MHA675RBNA	6 ¾	Right	Child (8 -12 yrs)	45mm (1 ¾")	311	311
MHA725LB	MHA725LBEU	MHA725LBNA	7 ¼	Left	Adolescent / Adult	50mm (2")	306	304
MHA725RB	MHA725RBEU	MHA725RBNA	7 ¼	Right	Adolescent / Adult	50mm (2")	307	305
MHA775LB	MHA775LBEU	MHA775LBNA	7 ¾	Left	Adult	54mm (2 ½")	302	312
MHA775RB	MHA775RBEU	MHA775RBNA	7 ¾	Right	Adult	54mm (2 ½")	303	313
MHA825LB	MHA825LBEU	MHA825LBNA	8 ¼	Left	Adult	54mm (2 ½")	300	N/A
MHA825RB	MHA825RBEU	MHA825RBNA	8 ¼	Right	Adult	54mm (2 ½")	301	N/A

Note: See page 97 for full details on Elegance glove ordering for this range.

Note: A full range of hand connection plates is available for the plain base Spring and Cable Operated Hands, featured on page 119.



Plain Base



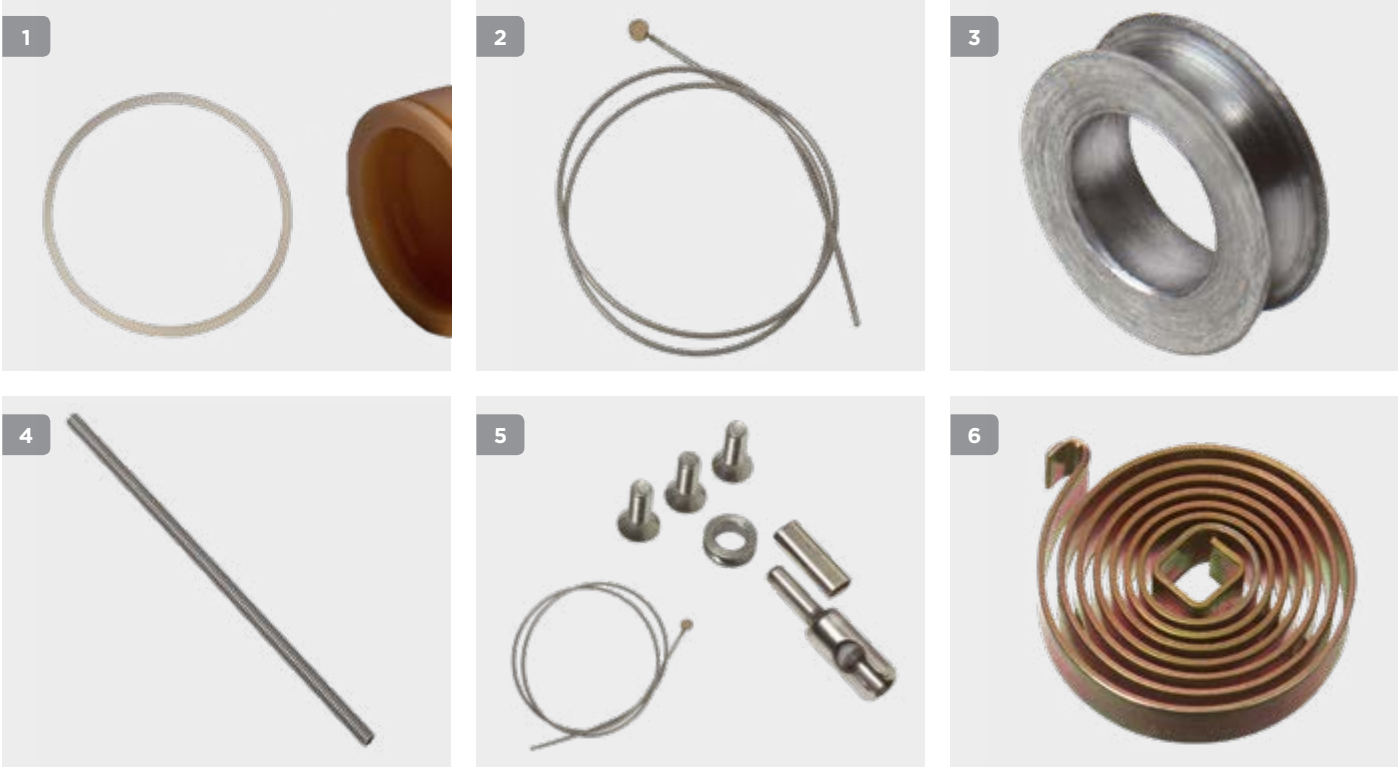
Threaded Stud

Spring Operated Hand									
Part Number Plain Base	Part Number M12 x 1.5 stud	Part Number ½ x 20 TPI stud	Size	Left / Right	Application	Wrist Unit Option	Male Glove Number	Female Glove Number	
3 SPA675L	SPA675LEU	SPA675LNA	6 ¾	Left	Child (8 -12 yrs)	45mm (1 ¾")	310	310	
SPA675R	SPA675REU	SPA675RNA	6 ¾	Right	Child (8 -12 yrs)	45mm (1 ¾")	311	311	
SPA725L	SPA725LEU	SPA725LNA	7 ¼	Left	Adolescent / Adult	50mm (2")	306	304	
SPA725R	SPA725REU	SPA725RNA	7 ¼	Right	Adolescent / Adult	50mm (2")	307	305	
SPA775L	SPA775LEU	SPA775LNA	7 ¾	Left	Adult	54mm (2 ⅛")	302	312	
SPA775R	SPA775REU	SPA775RNA	7 ¾	Right	Adult	54mm (2 ⅛")	303	313	
SPA825L	SPA825LEU	SPA825LNA	8 ¼	Left	Adult	54mm (2 ⅛")	300	N/A	
SPA825R	SPA825REU	SPA825RNA	8 ¼	Right	Adult	54mm (2 ⅛")	301	N/A	

Cable and Spring Operated Hand Inner Hand Shell (Includes Retention Ring)					
Part Number Front Pull	Part Number Back Pull	Part Number Spring and Myo	Size		Left / Right
4 IHA675LF	IHA675LB	IHA675L	6 ¾		Left
IHA675RF	IHA675RB	IHA675R	6 ¾		Right
IHA725LF	IHA725LB	IHA725L	7 ¼		Left
IHA725RF	IHA725RB	IHA725R	7 ¼		Right
IHA775LF	IHA775LB	IHA775L	7 ¾		Left
IHA775RF	IHA775RB	IHA775R	7 ¾		Right
IHA825LF	IHA825LB	IHA825L	8 ¼		Left
IHA825RF	IHA825RB	IHA825R	8 ¼		Right

Note: See page 98 for full details on Elegance glove ordering for this range.

Note: A full range of hand connection plates is available for the plain base Spring and Cable Operated Hands featured on page 121.



Inner Hand Shell Retention Ring

Part Number	Size	Left / Right	Diameter
1 B25320	6 ¾	Left or Right	46mm (1 ¾")
B25321	7 ¼	Left or Right	49mm (2")
B25322	8 ¼	Left or Right	58mm (2 ¼")

Operating Cable

Part Number	Size	Left / Right
2 B10734	6 ¾, 7 ¼, 7 ¾, 8 ¼	Left or Right

Cable Pulley

Part Number	Description
3 B07322	For looping control cable

Cable Outer

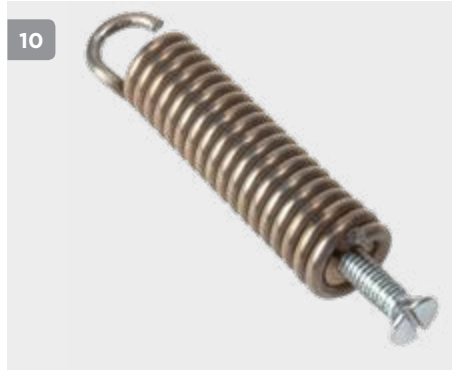
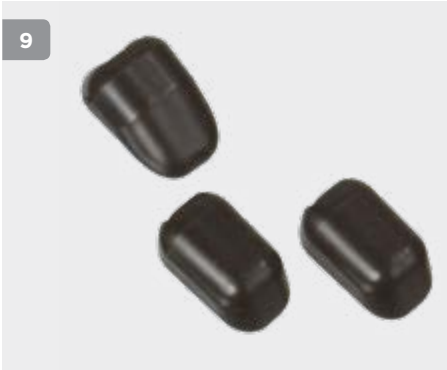
Part Number	Size	Left / Right
4 B25140	6 ¾, 7 ¼, 7 ¾, 8 ¼	Left or Right

Terminal Connections Kit

Part Number	Size	Left / Right
5 E25142	6 ¾, 7 ¼, 7 ¾, 8 ¼	Left or Right

Spring

Part Number	Size	Left / Right
6 B25161	6 ¾	Left or Right
B25115	7 ¼, 7 ¾, 8 ¼	Left or Right



Finger and Thumb Assemblies

Part Number Finger Assembly Cable Operated Hand	Part Number Thumb Assembly Cable Operated Hand	Part Number Thumb Assembly Spring Operated Hand	Part Number Finger Assembly Spring Operated Hand	Size	Left / Right
7 B30516	7a B30818	B26123	B26306	6 3/4	Left
B30515	B30817	B26124	B26304	6 3/4	Right
B30518	B30823	B26107	B26310	7 1/4, 7 3/4	Left
B30517	B30822	B26108	B26308	7 1/4, 7 3/4	Right
B30520	B30825	B26109	B26314	8 1/4	Left
B30519	B30824	B26110	B26312	8 1/4	Right

Cam

Part Number	Size	Left / Right
8 B26320	6 3/4	Left
B26321	6 3/4	Right
B26322	7 1/4, 7 3/4, 8 1/4	Left
B26323	7 1/4, 7 3/4, 8 1/4	Right

Finger Palp Kit (2 x Finger, 1 x Thumb)

Part Number	Size	Left / Right
9 E26325	6 3/4	Left or Right
E26326	7 1/4, 7 3/4	Left or Right
E26327	8 1/4	Left or Right

Spring - For Spring Operated Hand

Part Number	Size	Left / Right
10 E26115	6 3/4	Left or Right
E26114	7 1/4, 7 3/4, 8 1/4	Left or Right



Technical Information: Cable Operated and Spring Hands

Size	Width at Knuckles	Cable Pull	Max Opening	Weight	Base to Thumb Tip
5 ½	50mm (2")	29mm (1 ⅛")	44mm (1 ¾")	84g (3oz)	76mm (3")
6	57mm (2 ¼")	25mm (1")	50mm (2")	130g (4 ½oz)	102mm (4")
6 ¾	63mm (2 ½")	60mm (2 ⅜")	58mm (2 ¼")	224g (8oz)	108 (4 ¼")
7 ¼	70mm (2 ¾")	40mm (1 ⅝")	90mm (3 ½")	323g (11oz)	133mm (5 ¼")
7 ¾	82mm (3 ¼")	40mm (1 ⅝")	90mm (3 ½")	342g (12oz)	133mm (5 ¼")
8 ¼	87mm (3 ½")	42mm (1 ⅝")	95mm (3 ¾")	366g (13oz)	137mm (5 ⅜")

Child Cable Operated Hand Front Pull - Voluntary Opening

Part Number	Size	UK Size	Left / Right	Application	Wrist	Glove No.
1 B08361	5 ½	2" x 3"	Left	Child 2-5 years	40mm (1 ½")	46
B08360	5 ½	2" x 3"	Right	Child 2-5 years	40mm (1 ½")	47
C07331	6	2 ¼" x 4"	Left	Child 5-8 years	45mm (1 ¾")	44
C07330	6	2 ¼" x 4"	Right	Child 5-8 years	45mm (1 ¾")	45

Child Cable Operated Hand Back Pull - Voluntary Opening

Part Number	Size	UK Size	Left / Right	Application	Wrist	Glove No.
2 B08363	5 ½	2" x 3"	Left	Child 2-5 years	40mm (1 ½")	46
B08362	5 ½	2" x 3"	Right	Child 2-5 years	40mm (1 ½")	47
C07931	6	2 ¼" x 4"	Left	Child 5-8 years	45mm (1 ¾")	44
C07932	6	2 ¼" x 4"	Right	Child 5-8 years	45mm (1 ¾")	45

Child Spring Hand

Part Number	Size	UK Size	Left / Right	Application	Wrist	Glove No.
3 SP592L	5 ½	2" x 3"	Left	Child 2-5 years	40mm (1 ½")	46
SP592R	5 ½	2" x 3"	Right	Child 2-5 years	40mm (1 ½")	47
SP589L	6	2 ¼" x 4"	Left	Child 5-8 years	45mm (1 ¾")	44
SP589R	6	2 ¼" x 4"	Right	Child 5-8 years	45mm (1 ¾")	45

Child Cable Operated Hand - Spare Parts Operating Cable

Part Number	Description	Size	UK Size
4 B07365	Operating Cable, Front Pull	5 ½, 6	2", 2 ¼"
B10734	Operating Cable, Back Pull	5 ½, 6	2", 2 ¼"