

Seattle Lightfoot with Pyramid



The Seattle Lightfoot comes pre-assembled with a removable pyramid and spacer which is ready to install. This natural looking foot has a low profile build height option and four keel strengths, making it suitable for a wide range of applications.

The Seattle Lightfoot is an ideal foot for a user with a Symes amputation when the pyramid and spacer are removed, and the low profile build height option is selected.

Water-resistant*

*Water-resistant: Safe for contact with water and occasional submersion. Rinse immediately with fresh water and dry following exposure to water, particularly salt or chlorinated.

Features and Benefits

- Low profile selectable keel
- Ideal for the longer residuum
- Appropriate for low, medium and high activity levels
- Natural appearance
- Sandal toe
- Available in both light and dark foot shells

Cosmetics



Light/dark Sandal toe foot shell



Ordering Information

Trial Period - There is no trial period on this foot.

Impact Level Descriptions

Low: Low speed walking and low intensity activities - no variable cadence.

Medium: Medium impact activities including light sports.

Part Number	Description	Available Sizes (cm)
NSLF195	9.5mm Heel, Light	22-30
NSLF198	9.5mm Heel, Dark	22-30

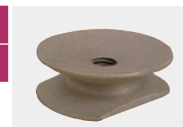
Ordering Example - NSLF195-25L-H6

Part Number	Size	Left / Right	Category
NSLF195	25	L	H6
NSLF198	25	L	H6

Additional Parts Ordering Information

Symes Nut

Part Number	Weight Limit	Weight
NSSY300	136kg	42g



Product Specification

Weight Limit	Impact Level	Weight of Unit	Sizes (cm)	Build Height (cm)	Warranty
136kg	L M H	480g Size 25cm	22-30	9 Size 25cm	2 years Foot shell - 1 year

Category Selection

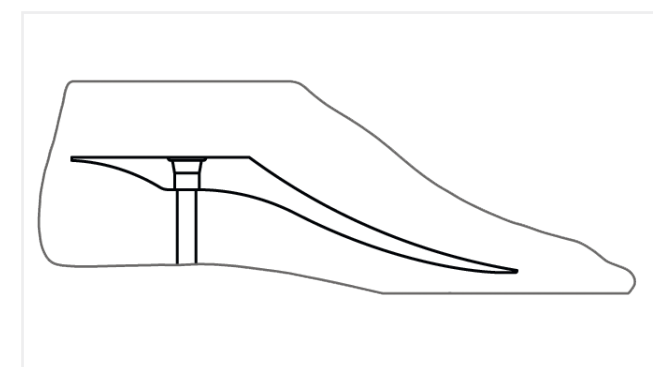
To optimise the selection and ensure amputee's safety, follow the steps below to determine the appropriate keel.

1. Locate the column that corresponds with the amputee's impact level.
2. Within the selected column, locate the amputee's weight.
3. Place the relevant H number into the part number for ordering.

Note: If the amputee has a long BK, carries heavy loads or will reach a higher impact level within a year, choose the next category higher.

Category Selection		
Cat.	Foot Size (cm)	Low to Medium
		Weight
H9	24-39	114-136kg
H8	23-29	91-113kg
H7	22-29	69-90kg
H6	22-28	46-68kg
H5	22-27	<45kg

Build Height and Heel Rise			
Part Number	Size (cm)	Build Height (cm)	Heel Rise (mm)
NSLF195	22-30	9	9.5
NSLF198	22-30	9	9.5



Seattle Lightfoot keel view