

The intuitive Trustep foot aims to provide a combination of the vertical motion, rotation and stability associated with the anatomical foot. Throughout the gait cycle, the bumpers compress to bring the toe and heel down at appropriate times; allowing the foot to maintain ground contact for firm footing.

The unique split-keel design that defines the Trustep provides up to 15mm of independent toe dorsiflexion during normal use. With a full range of options available, Trustep's versatile design allows for complete customisation, resulting in a natural gait pattern and unsurpassed comfort.

CES CPI F03: Use this code to read the Trustep clinical evaluation summary on the Steeper website.

Features and Benefits

- Tri-axial technology to adapt to uneven terrain
- Bumpers compress the toe and heel at appropriate times whilst providing cushioning and impact absorption
- Customisable bumpers for optimal control
- Anatomically designed foot shell with Spectra reinforcement
- Trustep patented Sealing Boot interlocks with the foot shell, keeping debris away from the foot



Cosmetics



Ordering Information

Trial Period - This foot has a 30 day trial period.

Impact Level Descriptions

Low: Daily activities include mostly level ground walking, moving around the home and the community.

Moderate: Daily activities include up to unlimited walking, climbing stairs and occasional moderate lifting (this does not include running).

High: Daily activities include fast walking, jogging, running, lifting heavy objects and/or recreational sports.

Part Number		
Left	NTS-L [Color] / [Mount] - [Foot Size] - [Width] - [Firmness]	Includes foot shell, CPI Spectra Sock and sealing boot.
Right	NTS-R [Color] / [Mount] - [Foot Size] - [Width] - [Firmness]	

■ - Colour of Cosmesis (C = Caucasian, T = Tan, B = Brown, J = Jet Black)
/ - Mounting (EN = Endo, ALX = Exo)
● - Foot Size in cm (22-31)
● - Width (N = Narrow, W = Wide*)
▲ - Firmness Category (1-9)

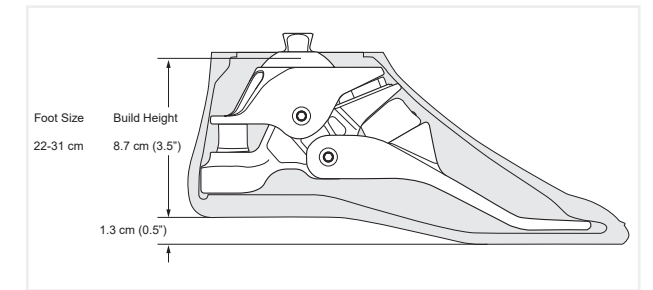
*When ordering **Wide**: for sizes 24-31cm only. Wide option suggested for male patients.

Weight (kg)	Firmness Category					
	Sizes 21-30cm			EXO ONLY		
	Low Impact	Mod Impact	High Impact	Low Impact	Mod Impact	High Impact
0-33	1	1	2	-	-	-
34-45	2	2	3	-	-	-
55-63	3	3	4	-	-	-
64-72	4	4	5	-	-	-
73-81	4	5	6	-	-	-
82-91	5	6	6	-	-	-
92-100	6	6	7	-	-	-
101-113	6	7	7	-	-	-
114-125	7	7	8	-	-	-
126-136	8	8	8	-	-	-
137-150	-	-	-	8	9	9
151-160	-	-	-	9	9	9

Product Specification

Mount	Weight Limit	Build Height	Sizes	Weight of Unit	Impact Level	Warranty	Foot Shell
Endo (IP)	136kg	8.7cm	22-31cm	678g (Size 26)	LMH	3 years (18 months over 136kg) Foot shell - 6 months	C T B J ■ Caucasian, Tan, Brown or Jet Black Narrow or Wide width
Exo (ALX)	160kg	15.2cm					

Technical Information

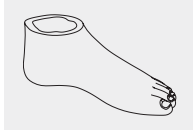


Gait Match					
Firmness Category	Front Bumper	Ankle Bushings	Mid-stance Pad	Rear Bumper	Lower Bushings
1	1	S	M	XS	one firmness
2	2	S	M	XS	one firmness
3	3	S	M	S	one firmness
4	4	S	M	S	one firmness
5	5	M	M	M	one firmness
6	6	M	M	H	one firmness
7	7	M	M	1X	one firmness
8	8	F	F	2X	one firmness
9	8	F	F	3X	one firmness

Foot orders include extra rear bumper (one category softer, recommended for AK)

Note: Please see the following page for Trustep spare parts ordering information.

Spare Parts Ordering Information



Foot Shell	Size (cm)	Shell
------------	-----------	-------

NTS-S ■●●-▲●	22-31	S
NTS-XS ■●●-▲●	22-31	XS*

*Exo only, add 1 day for processing.

- = "L" or "R" for Left or Right
- = Colour (C = Caucasian, T = Tan, B = Brown, J = Jet Black)
- ▲ = Foot size in cm (22-31)
- = Width (N = Narrow, W = Wide*) *24-31cm only



Shellread	Size (cm)
-----------	-----------

NTS-T ■●●-▲N	21-30
NTS-T ■●●-▲W	24-31

- = "L" or "R" for Left or Right
- = Colour (N = Neutral, J = Jet Black)
- ▲ = Foot size in cm (22-31)
N = Narrow, W = Wide



CPI Spectra Sock	Size (cm)
------------------	-----------

NTS-SS-2231	22-31
NTS-SSK-2231	22-31 (6 pack)

Endo Ankle

Description

NTS-ENA-2224	Endo Ankle, 22-24cm
NTS-ENA-2531	Endo Ankle, 25-31cm

Exo Ankle

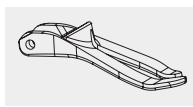
Description

NTS-ALXA-2224	Exo Ankle, 22-24cm
NTS-ALXA-2531	Exo Ankle, 25-31cm



Endo Sealing Boot	Size (cm)
-------------------	-----------

NTS-SB ■●●-2224	22-24
NTS-SB ■●●-2526	25-26
NTS-SB ■●●-2730	27-30



Forefoot	Description
----------	-------------

NTS-FF-2224 ■	Forefoot Bone, 22-24cm
NTS-FF-▲■	Forefoot Bone, indicate size: 25-30cm
NTS-FF-31	Forefoot Bone, 31cm

- = "L" or "R" for Left or Right
- = Colour (C = Caucasian, T = Tan, B = Brown, J = Jet Black)
- ▲ = Foot size in cm (25-30)

Bumpers & Bushings	Description
--------------------	-------------

NTS-FB-1	Front Bumper 1
NTS-FB-2	Front Bumper 2
NTS-FB-3	Front Bumper 3
NTS-FB-4	Front Bumper 4
NTS-FB-5	Front Bumper 5
NTS-FB-6	Front Bumper 6
NTS-FB-7	Front Bumper 7
NTS-FB-8	Front Bumper 8
NTS-FB-9	Front Bumper 9
NTS-RB-XS	Rear Bumper, XS
NTS-RB-S	Rear Bumper, S
NTS-RB-M	Rear Bumper, M
NTS-RB-H	Rear Bumper, H
NTS-RB-1X	Rear Bumper, 1X
NTS-RB-2X	Rear Bumper, 2X
NTS-RB-3X	Rear Bumper, 3X
NTS-MP-M	Midstance Pad, Medium
NTS-MP-F	Midstance Pad, Firm
NTS-LB	Lower Bushing
NTS-ABS	Ankle Bushing, Soft
NTS-ABM	Ankle Bushing, Medium
NTS-ABF	Ankle Bushing, Firm
NTS-ABR	Ankle Bushing, Rigid



Alignable Exo Block	Description
---------------------	-------------

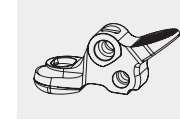
NTS-XBK ■-2224	Alignable Exo Block Kit, 22-24cm
NTS-XBK ■-2526	Alignable Exo Block Kit, 25-26cm
NTS-XBK ■-2731	Alignable Exo Block Kit, 27-31cm

■ = "L" or "R" for Left or Right
Includes Exo Block, Lamination Gasket and Mounting Bolt.



Exo Pyramid Tool Kit	Description
----------------------	-------------

NTS-EXPK-30	Exo Pyramid Tool Kit, 30mm
-------------	----------------------------



Also available in heavy duty version.

Moulded Heel Bone	Description
-------------------	-------------

NTS-MH-2224	Moulded Heel Bone, 22-24cm
NTS-MH-2526	Moulded Heel Bone, 25-26cm
NTS-MH-2731	Moulded Heel Bone, 27-31cm
NTS-MHK-2224	Moulded Heel Bone Kit, 22-24cm**
NTS-MHK-2526	Moulded Heel Bone Kit, 25-26cm**
NTS-MHK-2731	Moulded Heel Bone Kit, 27-31cm**

**Moulded Heel Bone Kit Contents:
• 1 x NTS-MAX-MH (Trustep MAX insert)
• 1 x NTS-IS-MH (Trustep Max/Min insert screw)
• 1 x NTS-MH-2224/2526/or 2731 (Trustep Moulded Heel Bone)

Hardware	Description
----------	-------------

NCP-AP-L	Axial Pin, Long, 22-31cm
NCP-APS	Axial Pin Screw
NTS-MAX-MH	Max Insert, Moulded Heel
NTS-MIN-MH	Min Insert, Moulded Heel
NTS-IS-MH	Max/Min Insert Screw, Moulded Heel
NTS-S10-25	Exo Mounting Bolt, M10 x 25mm
NTS-RBK	Pyramid Tool Retaining Bolt Kit (4pc), M6 x 12mm



1
2
3
4
5
6
7
8
9
10

1
2
3
4
5
6
7
8
9
10