

Xtend Connect

The Xtend Connect components give the prosthetic user greater flexibility, allowing devices to be easily changed between sockets or prosthesis. With a simple wheel lock mechanism and unique safety button, the Xtend Connect system can be rotated in any direction and freely combined with other prosthetic components based on the user's preferences.

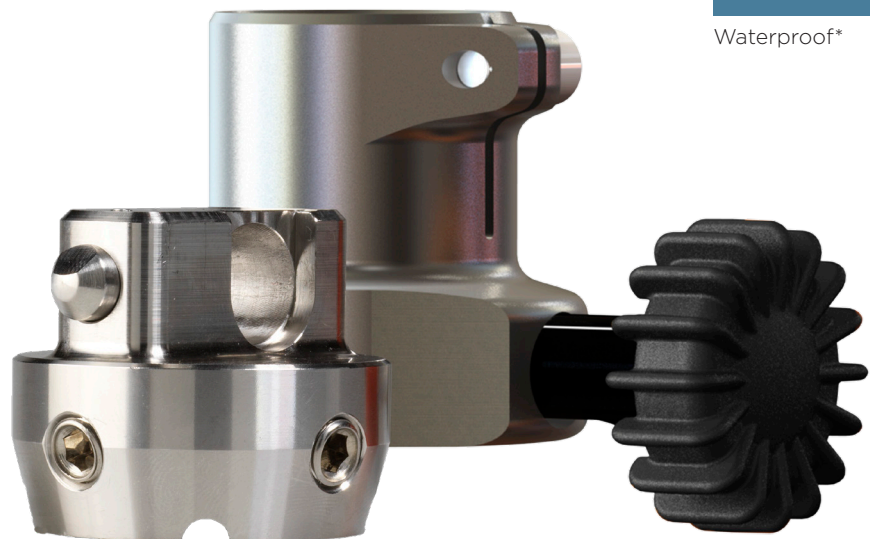
A basic Xtend Connect set consists of two parts; the Xtend Connect Quick Fit Unit which is opened and closed via the locking wheel and receives the safety button on the Base Unit. These are available with tube clamp, 4-hole, and female pyramid fittings. The Xtend Connect Base Unit provides a standard male or female pyramid to connect components with the Quick Fit Connect Unit.

Features and Benefits

- Variety of components allow for custom configurations
- Quickly exchange feet whilst keeping the same socket
- Change sockets whilst keeping limb builds intact
- Can be used to fit transfemoral or transtibial components together
- Safety button ensures secure connection from the first step
- Available in two colour options: orange or black



Waterproof*



Product Specification

Material	Weight Limit	Impact Level	Warranty
Stainless steel	100kg	K1 - K3	All parts supplied with a 2 year warranty

*Waterproof note: Rinse with fresh water and dry following exposure to salt water or chlorinated water.

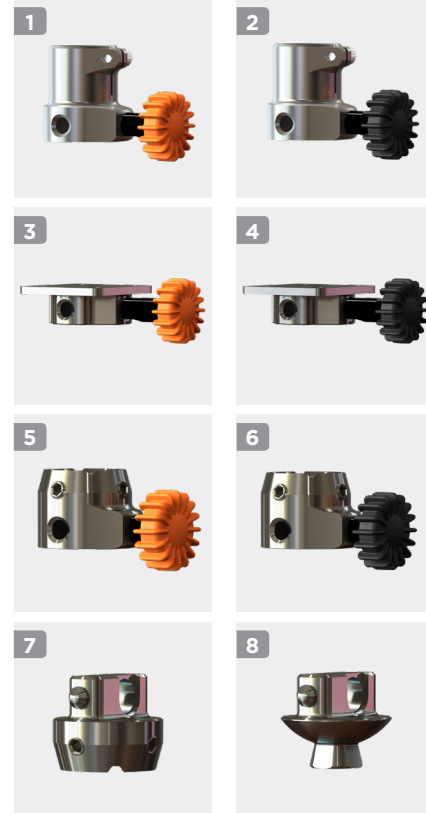
Ordering Information

Xtend Connect Quick Fit Units

Part Number	Description
1 NA100-Q30	Quick Fit Unit with tube clamp 30mm, orange edition
2 NA100-Q30-B	Quick Fit Unit with tube clamp 30mm, black edition
3 NA100-Q4	Quick Fit Unit with 4-hole adapter, orange edition
4 NA100-Q4-B	Quick Fit Unit with 4-hole adapter, black edition
5 NA100-QF	Quick Fit Unit with female pyramid receiver, orange edition
6 NA100-QF-B	Quick Fit Unit with female pyramid receiver, black edition

Xtend Connect Base Units

Part Number	Description
7 NA100-BF	Base Unit with female pyramid receiver
8 NA100-BM	Base Unit with male pyramid adapter



Xtend Connect Build Dimensions

Combination	Description	Effective Height	Total Width Wheel Locked	Total Weight
NA100-Q4 & NA100-BF	Xtend Connect Quick Fit Unit, 4-hole adapter & Xtend Connect Base Unit, female pyramid adapter	39mm	74mm	338g
NA100-Q4 & NA100-BM	Xtend Connect Quick Fit Unit, 4-hole adapter & Xtend Connect Base Unit, male pyramid adapter	26mm	74mm	314g
NA100-Q30 & NA100-BF	Xtend Connect Quick Fit Unit, tube clamp 30mm & Xtend Connect Base Unit, female pyramid adapter	36mm	58mm	330g
NA100-Q30 & NA100-BM	Xtend Connect Quick Fit Unit, tube clamp 30mm & Xtend Connect Base Unit, male pyramid adapter	23mm	58mm	305g
NA100-QF & NA100-BF	Xtend Connect Quick Fit Unit, female pyramid adapter & Xtend Connect Base Unit, female pyramid adapter	52mm	58mm	303g
NA100-QF & NA100-BM	Xtend Connect Quick Fit Unit, female pyramid adapter & Xtend Connect Base Unit, male pyramid adapter	39mm	58mm	279g

Please refer to the Lindhe Xtend Component Build Dimensions Chart for more information.