

Miami J® Cervical Collar



Features and Benefits

- Sorbatex™ padding is antibacterial and clinically proven to inhibit microbial growth, which enhances comfort and helps ensure patient compliance
- MRI, CT and X-ray lucent
- Bioengineered to minimise pressure points in key known areas: chin, occiput, trapezius and clavicle
- Comfort adjustment buttons for occiput and sternal pad removable when lying and swallowing

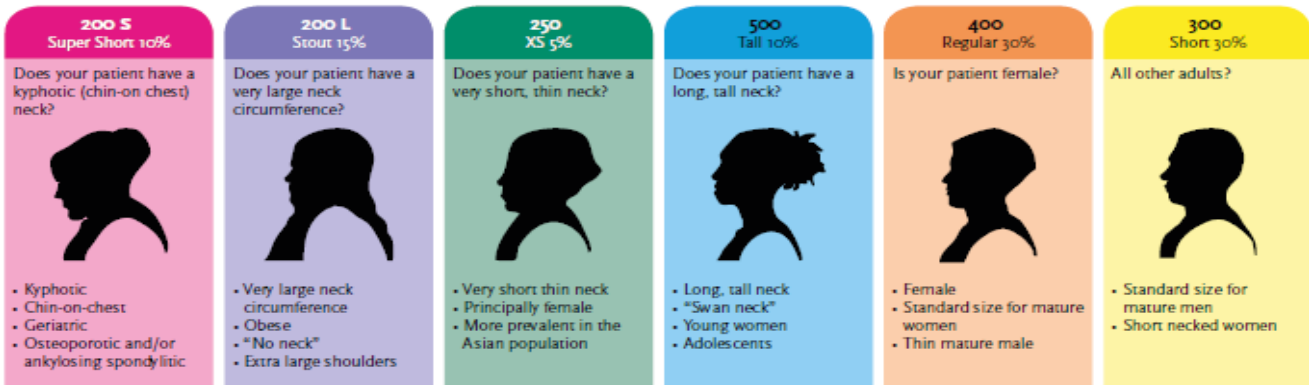
Indications for Use

- Post trauma
- Stable cervical fractures
- Cervical spondylitis
- Herniated cervical disc
- RA and OA cervical spine
- Cervical spondylosis
- Post operative

Sizing Chart

Speciality sizes: 30% of the population

Standard sizes: 60% of the population



Phenotype based sizing system makes size selection simple while drastically reducing margin of error in fitting a patient. Each collar has bioengineered size specific front and back sections designed to work together for superior immobilisation.

Miami J front and back panels may be interchanged to accommodate patient anatomy, e.g. a short front may be used with a tall back. Choose collar size based on patient neck height, not patient body size. Super short consist of a regular back panel and a super short front panel.

Please contact Customer Services for guidance on sizing.

Size	Product Code Collar Set*	Product Code Collar	Product Code Collar Back	Product Code Collar Front	Product Code Replacement Pads
Super Short	MJR-200S	MJ-200S	MJ-400BK**	MJ-200SFRT	MJP-100
Stout	MJR-200L	MJ-200L	MJ-200LBK	MJ-200LFRT	MJP-200L
X-Small	MJR-250	MJ-250	MJ-250BK	MJ-250FRT	MJP-250
Short	MJR-300	MJ-300	MJ-300BK	MJ-300FRT	MJP-100
Regular	MJR-400	MJ-400	MJ-400BK	MJ-400FRT	MJP-100
Tall	MJR-500	MJ-500	MJ-500BK	MJ-500FRT	MJP-100

*Collar sets come with one additional set of replacement pads.

**Super Short collars are packaged with Regular Back Panels.