



New
Extended
Warranty

Steeper
Door Opener Packages

 **steeper**
Creating life's turning points, together

Steeper Door Opener Packages

Steeper provides the very best in door automation solutions. For complete peace of mind all Steeper door openers are provided with an 18-month breakdown cover and 12-month part warranty as standard.

With over 30 years' experience in assistive technology, our team of engineers and product specialists is the largest in the industry. As a result, we offer nationwide coverage and a more responsive and proactive service for delivery, installation, maintenance and repair. Home control devices are one of our specialities and with over 20 years' experience in door openers, we are here to help overcome the difficulties associated with door access. We offer a wide variety of automatic door solutions to suit the unique needs of our customers and with a wide range of complementary products and devices, we are able to tailor all our packages to suit individual requirements.



Integrated solutions

We install, repair and maintain a wide range of automatic swing doors with access control elements that have been designed to our customers' specific requirements. Various options to activate automatic doors include:

- Key fobs, either fitted to a wheelchair, on a lanyard, keyring or pocket
- Doors can be fitted with a wall mounted push pad
- Pressure mats placed under rugs to open the door when pressure is applied
- Infra-red disabled door motion sensors offering hands-free door activation

ADSA approved engineers

With quality and safety at the core of everything we do, all Steeper engineers are ADSA approved, meaning that we are in a strong position to be able to maintain and service all the door openers we supply. All Steeper engineers are conversant with the current regulations and are there to help provide our customers with the information that they need to operate their doors safely and in accordance with the latest rules and regulations. The ADSA course is well recognised in the industry, designed with both the engineer and the end user in mind and intended to promote safety and long term aftercare.

For more information on any aspect of the Steeper door opener packages, please contact customer services on 0113 207 0449 or e-mail assist@steepergroup.com.



Gilgen Door Opener Package

The Gilgen FD20 is a powerful and silent running swing door that automatically opens and closes internal doors and large, heavy externally facing doors with ease. With inherent strength and Swiss build quality, the versatile drive system enables smooth, contactless and hygienic automatic access, making doors significantly easier to operate.

Features and benefits

- Easily operates doors up to 250kg
- Handles wind loads up to 50mph making it ideal for externally facing doors
- Certified for use on fire doors, with safety sensors
- Low energy operating mode
- Defaults to close on spring tension
- Variety of compatible optional extras
- High quality cover ensuring a discreet and polished appearance

Standard Gilgen package

Full installation by an ADSA approved Steeper engineer, 18 month breakdown cover and 12 month part warranty, all included within the standard package.

The standard Gilgen package includes the following parts:

FD20 door operator and FD20 mounting plate

FD20 or FD20-EXTRA and FD20-MP



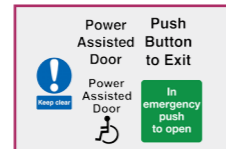
340mm safety sensor
SAP4122



900mm safety sensor
SAP4123



Signage
NHWO313



Finger guard available in black or white
DWS-FGW or DWS-FGB



Customising your Gilgen package

All Gilgen packages can be customised and tailored to individual requirements, the following parts are some of the most commonly chosen additional extras. Please consult with a Steeper engineer on all aspects of customisation.

Activation methods

Fob system

TX26-T1 (fob) and
RX26-XPL (receiver)



Push pad

RTEPTO (pad) and
SETMC1C9V (wireless)



Rocker switch

BPDOORS (switch) and
SETMC1C9V (wireless)



Card reader

DTRR1434R (reader) and
DTXT5434 (card)



Key code

NHW0364



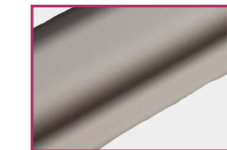
Note: All activation methods are created bespoke to your requirements, if you desired method is not illustrated above, please consult with your Steeper engineer for further options available.

Additional personalised systems

5A battery backup
ACC0172



External finger guard
FP800



Internal finger guard
ACC0112

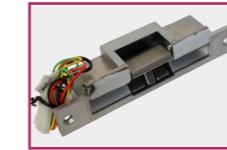


Locking systems

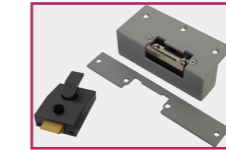
Multipoint lock
WH0001



Mortice release
NHWO617



Night latch and latch release
ASEC-84 and M1-A-LOCK



Note: other locks and locking systems are available, please consult with your Steeper engineer for more details.

Additional extras

Spindle extension
FD20-50MM

Inswing slider packer
FD20-P

Voltage reducer
SAP0175

Abloy Door Opener Package

Abloy door openers are high quality door operators that work with all doors, from heavy duty, high traffic exterior doors to interior fire doors. They can be operated by various means, including controllers with infrared technology, pressure pads, proximity readers and push pads.

Features and benefits

- Narrow, low profile design
- “Push & go” function as standard
- Programmable “free swing function” as standard
- Fire detector assembly option
- High quality cover ensuring a discreet and polished appearance

Standard Abloy package

Full installation by an ADSA approved Steeper engineer, 18-month breakdown cover and 12-month part warranty, all included within the standard package.

The standard Abloy package includes the following parts:

DA460 door operator
E25044



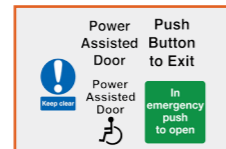
340mm safety sensor
SAP4122



900mm safety sensor
SAP4123



Signage
NHW0313



Finger guard available in black or white
DWS-FGW or DWS-FGB



Customising your Abloy package

All Abloy packages can be customised and tailored to individual requirements, the following parts are some of the most commonly chosen additional extras. Please consult with a Steeper engineer on all aspects of customisation.

Activation methods

Fob system

TX26-T1 (fob) and
RX26-XPL (receiver)



Push pad

RTEPTO (pad) and
SETMC1C9V (wireless)



Rocker switch

BPDOORS (switch) and
SETMC1C9V (wireless)



Card reader

DTRR1434R (reader) and
DTXT5434 (card)



Key code

NHW0364



Note: All activation methods are created bespoke to your requirements, if your desired method is not illustrated above, please consult with your Steeper engineer for further options available.

Additional personalised systems

5A battery backup
EAPS24/5



2 x batteries
EABAT12/7



External finger guard
FP800



Internal finger guard
ACC0112

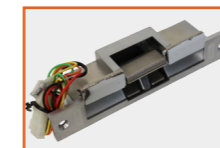


Locking systems

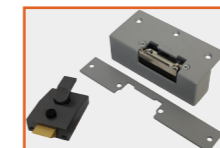
Multipoint lock
WH0001



Mortice release
NHW0617



Night latch and latch release
ASEC-84 and M1-A-LOCK



Note: other locks and locking systems are available, please consult with your Steeper engineer for more details.

Additional extras

Push arm long
NHW0576